

Opening of Heyn Memorial Hall 1929

ST. MARK'S, DUNDELA.

Bishop Dedicates Memorial to the Late Mr. F. L. Heyn.

MAGNIFICENT CHURCH HOUSE.

The magnificent Church House which has been given to St. Mark's, Dundela, Belfast, as a memorial to the late Mr. F. L. Heyn by his widow and sons was dedicated on Saturday afternoon by the Lord Bishop of Down and Connor and Dromore (the Right Rev. Dr. Grierson).

Simplicity marked the ceremony, which was preceded by a short service in the church, where the rector (the Rev. Canon E. C. Hayes) officiated. Clergy and lay officials led the procession through the rectory grounds to the new building, where the Lord Bishop, after knocking three times on one of the main doors, was duly admitted.

Members of the congregation crowded the main hall, and, after the choir had led in praise, Canon Hayes, on behalf of Mrs. Heyn and her sons, requested the Bishop "to dedicate this building for the various uses of the parish of St. Mark's, and in memory of F. L. Heyn."

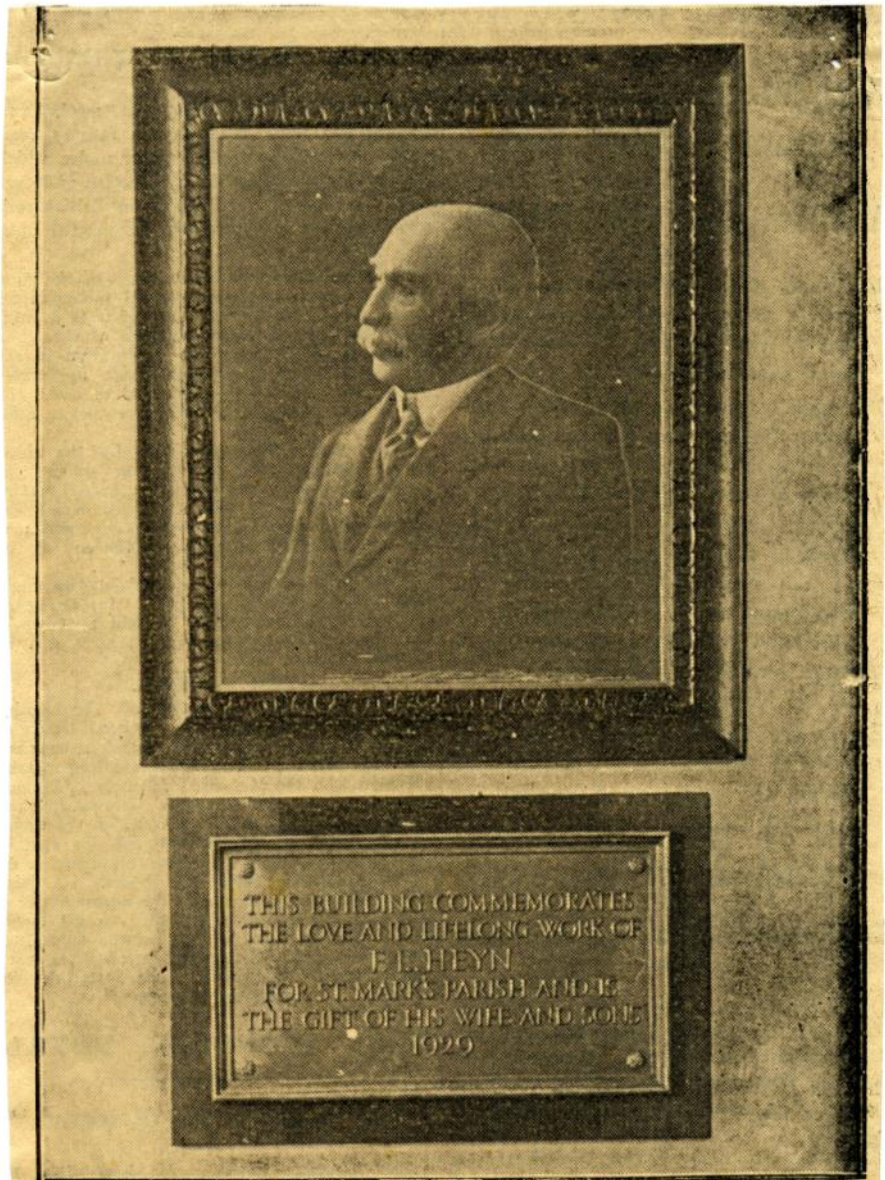
Dr. Grierson said: "The duty now falls upon me of dedicating these splendid parochial buildings. It would be difficult for me to over-estimate the benefit which we believe will accrue to our Church in this parish from this magnificent gift."

"Here will be a central home for all parochial organisations, here the power of the Gospel to strengthen and enlarge all that is truly human will, we doubt not, be exemplified, here also will be enshrined a very precious memory—the memory of F. L. Heyn, an outstanding citizen and loyal churchman—one who loved St. Mark's with a great love, and served it with life-long devotion."

"The parish receives this great gift of his wife and sons. They receive it with deep gratitude, and with the intention of so using it that the wishes of the donors and of him in whose memory it is erected may be, by the help of God abundantly fulfilled."

Nearing the end of the service there was "silence for a space," and the Bishop formally dedicated the building "in pious memory of Mr. F. L. Heyn," and for the use of the church.

The church house, an illustration and description of which appeared in the "Belfast News-Letter" of Saturday last, is one of the most beautiful and commodious buildings of its kind in Belfast. There is a portrait of the late Mr. Heyn in the main entrance, and underneath it a tablet with the following inscription—"This building commemorates the love and life-long work of F. L. Heyn for St. Mark's Parish and is the gift of his wife and sons—1929."



PORTRAIT OF THE LATE MR. HEYN TO WHOSE MEMORY THE NEW CHURCH HALL HAS BEEN ERECTED. UNDERNEATH IS THE TABLET WHICH ADORN A WALL IN THE ENTRANCE HALL.



THE CHOIR OF ST. MARK'S (DUNDELA) AT THE DEDICATION SERVICE.